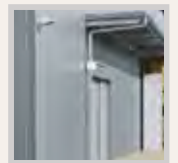
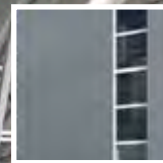
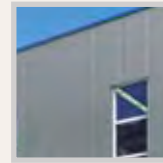
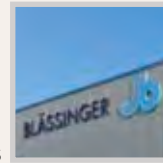


Automated order picking and replenishment warehouse for roller bearing distributors

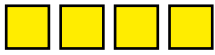
325



METAL GOODS /
ENGINEERING

Case Description





experience the difference



Driving, steering and moving; that is what Josef Blässinger GmbH + Co. KG has been doing since the company was founded in the year 1930. Customer service, flexibility and quality are always its highest priorities.

Design criteria

In a time, when product cycles keep getting shorter and price pressure keeps growing, the optimization of business processes is the key to success. »We've always been in motion and will stay that way« – this is the highest principle of Blässinger.

In order to maintain this standard, also in the future, an automated order picking and replenishment warehouse was built at the company's manufacturing location in Ostfildern (near Stuttgart).



The solution

The tray and bin warehouse allows for the efficient storage and picking of high-quality roller bearings, linear engineering and drive technology products.



The tray warehouse (one aisle) is operated by a *runloader*[®] AS/RS stacker crane with »pull handling device technique«. A combined workstation, for goods-receiving and picking of large quantities and items, is directly connected with the warehouse; the trays are handled utilizing a twin-track conveyor system.

The bin warehouse (two aisles) is operated by *sprinter*[®] AS/RS miniload cranes. It is connected by a conveyor system with three goods-receiving, four order picking and four packing stations. The bins are provided, in and out, with a *psb* roller conveyor system. The entire conveyor technology is operated without the help of pneumatic elements.

The *psb selektron*[®] WMS was supplied as a Windows-2003-Cluster-Server. The connection to the customer's ERP system is realized via a network connection.

Customer: Josef Blässinger GmbH + Co. KG,
73760 Ostfildern / Germany

System: 4 goods-receiving, bin and tray conveyor system, small parts warehouse with 2 *sprinter*[®] and 1 *runloader*[®] AS/RS miniload systems, 5 order picking stations, 4 packing stations, *selektron*[®] WMS, SCADA Win CC